



WILDBEAR

From



Est. UK 1998
Bearmach
LAND ROVER PARTS



The Wildbear™ range from Bearmach is a new age of style, quality and finish, priding itself on being fit for purpose and built to last.

Allowing you the confidence to create a vehicle with individuality and style that will endure the harshest trials that the worlds varied environments can throw at it. The essence of Wildbear™ will enhance your Land Rover and leave a lasting impression with the manufacturing excellence and care that has been taken at every stage of the development of this unique range.

Working with **British** designers, engineers and manufacturers, Wildbear™ has ensured that its range is a class above the rest.

When you buy Wildbear™ you can be assured that you have bought into a calibre of parts that matches durability of need with conception of a new aesthetically unique style of products, proudly founded by Bearmach.

Focus on Finish: Every product in the Wildbear™ range has a strong emphasis on finish. We have listened to dealers and customers, looked at competitor products and wanted to be sure that the Wildbear™ range was tough, strong and lasting. We have focused on quality of the materials selected and the finishes chosen, from galvanising to E-coating* and Rogard 500** zinc pre-treatments topped with specialist colour finishes unique to this market whilst ensuring stainless steel fittings for everything.

With Wildbear™ you can trust our warranty and be assured we are focused on the finish of your product, no matter what road you travel upon.

Quality over Quantity: Many companies offer cheaper pricing by stacking products high and cheap. Sourcing from the Far-East and having little or no control over quality, but rather focussing on quantity. At Wildbear™, our focus is reversed; we ensure our **British** manufacturers have regular manufacturing forecasts, allowing them to build parts in smaller but more frequent batches meaning greater attention to detail and therefore fantastic quality throughout the range. With high quality control at Bearmach, we will only sell what passes our stringent QC checking process.

Fit for Purpose: Wildbear™ is fit for purpose, where ever you should choose to take it. From woodland, to mountains, glens to lakes, dunes in the sunshine to mud pits in the pelting rain. We have tested the range over the past 9 months, taken on board feedback from independent reviewers and ensured the range we have launched is fit for purpose and ready for customers.

Flying the Flag: The UK has some of the finest mechanical engineers and bespoke manufacturing facilities in the world (in our opinion) and it has been a pleasure working alongside great minds and Land Rover enthusiasts to create this range. With regular product focus groups we have ensured this range responds to the need and desire for a fantastic range of quality products that exceed consumers expectations.

So it gives us great joy that the majority of the Wildbear™ range is sourced from the UK. We only sourced outside of the UK where it was impossible to find what we needed, though we are still working alongside British engineers on design and specification.

Simply the Best..... an unbeatable range of products, with the unique bear logo, its only Wildbear™ if it has the "WB" stamp of approval.

** The Electrophoretic Coating (E-Coat) process is widely used in the automotive and other industries for corrosion protection as it offers the ability to deposit a uniform coating over an entire component including those with bends, cavities or areas which would be hard to coat with a conventional primer powder coat or liquid spray painting process. Designed to offer in excess of 1000 hours of salt spray resistance it is widely regarded as the best available anti corrosion primer paint for mild steel.*

*** Rogard 500 is a zinc coating used extensively in marine applications. Designed to offer in excess of 500 hours salt spray resistance to corrosion.*

95% of
**Products Designed
and Manufactured
in the UK**



| Diff Guard | | | | |
|---------------------|------------|-------|----------------------------|-----------------|
| Application | | | | Part Number |
| Series 3 88" | 1971-1984 | Front | LHD/RHD | BA 7603 |
| Series 3 88" | 1972-1984 | Rear | | BA 7604 |
| Series 3 109" | 1973-1984 | Rear | Salisbury Axle | BA 7609 |
| Forward Control 101 | All Types | Front | Salisbury Axle | BA 7609 |
| Defender 90 | Up to 1998 | Front | LHD Bolt-on | BA 7600 |
| Defender 90 | 1998 on | Front | LHD Bolt-on | BA 7600A |
| Defender 90 | 1998 on | Front | LHD | BA 7603 |
| Defender 90 | Up to 1998 | Front | RHD | BA 7601 |
| Defender 90 | 1998 on | Front | RHD | BA 7602 |
| Defender 90 | Up to 1998 | Rear | | BA 7604 |
| Defender 90 | 1998-2006 | Rear | LHD/RHD | BA 7606 |
| Defender 90 | 2007 on | Rear | LHD/RHD | BA 7607 |
| Defender 110 | Up to 1998 | Front | LHD Bolt-on | BA 7600 |
| Defender 110 | 1998 on | Front | LHD Bolt-on | BA 7600A |
| Defender 110 | 1998 on | Front | LHD | BA 7603 |
| Defender 110 | Up to 1998 | Front | RHD | BA 7601 |
| Defender 110 | 1998 on | Front | RHD | BA 7602 |
| Defender 110 | Up to 2002 | Rear | | BA 7609 |
| Defender 110 | 2003 on | Rear | | BA 7610 |
| Defender 130 | Up to 1998 | Front | LHD Bolt-on | BA 7600 |
| Defender 130 | 1998 on | Front | LHD Bolt-on | BA 7600A |
| Defender 130 | 1998 on | Front | LHD | BA 7603 |
| Defender 130 | Up to 1998 | Front | RHD | BA 7601 |
| Defender 130 | 1998 on | Front | RHD | BA 7602 |
| Defender 130 | Up to 2002 | Rear | | BA 7609 |
| Defender 130 | 2003 on | Rear | | BA 7610 |
| Discovery 1 | Up to 1998 | Front | LHD Bolt-on | BA 7600 |
| Discovery 1 | Up to 1998 | Front | LHD | BA 7603 |
| Discovery 1 | Up to 1998 | Front | RHD | BA 7601 |
| Discovery 1 | 1989-1998 | Rear | Non rubber drive coupling | BA 7604 |
| Discovery 1 | 1994-1998 | Rear | With rubber drive coupling | BA 7605 |
| Discovery 2 | 1998-2004 | Front | LHD/RHD | BA 7603 |
| Discovery 2 | | Front | LHD | BA 7600A |
| Discovery 2 | | Front | RHD | BA 7600A |
| Discovery 2 | 1998-2004 | Rear | LHD/RHD | BA 7608 |
| Range Rover Classic | Up to 1995 | Front | LHD Bolt-on | BA 7600 |
| Range Rover Classic | | Front | LHD | BA 7603 |
| Range Rover Classic | Up to 1995 | Front | RHD | BA 7601 |
| Range Rover Classic | Up to 1995 | Rear | | BA 7604 |

These guards offer unsurpassed protection for many types of Land Rover axles.

They have been designed to give maximum protection whilst enabling the ability to carry out routine maintenance without removing the guard. Our guards offer superior protection being independently mounted from the diff pan reducing the possibility of impact damage and subsequent oil leaks.

The guard also protects the track rod at the rear of the axle.

All guards are electroplated for corrosion resistance and full fitting instructions and bolt packs are supplied.

Manufactured from 6mm steel the guards are easily mountable with a full fitting kit and instructions included.

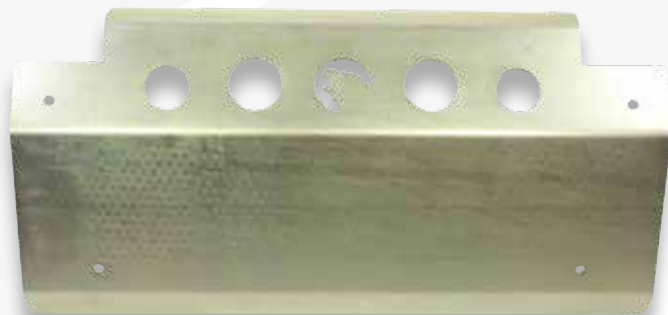
The rear guards provide protection to the propshaft drive flange, they give a smooth ramp to prevent snagging on rocks and tree stumps at the front of the axle and wrap around the rear of the diff pan to give the same level of protection as the front diff guard.





Steering Guards

| Application | | | Part Number |
|-------------|-----|--------------------|----------------|
| Defender | RHD | Steel Zinc 500 | BA 7578 |
| Defender | LHD | Steel Zinc 500 | BA 7580 |
| Defender | RHD | Alloy Zinc 500 8mm | BA 7579 |
| Defender | LHD | Alloy Zinc 500 8mm | BA 7581 |



Underbody Protection

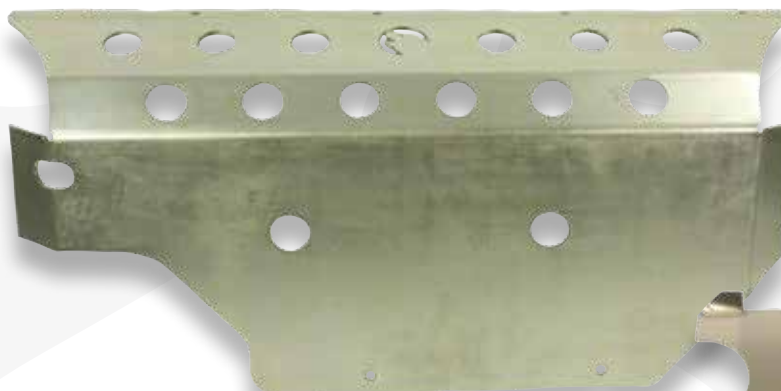
Steering Guards: With radius edges, ventilation holes for added cooling and the Wildbear™ logo that assures you a quality product! Brackets are 5mm steel with recovery eyes.

Available in either a 5mm steel plate or 8mm N5083 Alloy.

All mild steel parts are zinc coated with Rogard 500 zinc finish to assure a long rust free life.

Transmission Guards: Designed to protect vulnerable transmission and available in either a 4mm steel plate or 6mm N5083 Alloy. All mild steel parts are zinc coated with Rogard 500 zinc finish to assure a long rust free life.

Tank Guards: Designed to protect fuel tanks from punctures and damage when driving off-road or in harsh environments, available in either a 4mm steel plate or 6mm N5083 alloy. All mild steel parts are zinc coated with Rogard 500 zinc finish to assure a long rust free life.



Fuel Tank Guards

| Application | | | Part Number |
|------------------|----------|----------------|----------------|
| Defender 90 | Pre Td5 | Steel Zinc 500 | BA 7582 |
| Defender 90 | Pre Td5 | N8 Alloy | BA 7583 |
| Defender 90 | Td5/Tdci | Steel Zinc 500 | BA 7584 |
| Defender 90 | Td5/Tdci | N8 Alloy | BA 7585 |
| Defender 110/130 | Pre Td5 | Steel Zinc 500 | BA 7586 |
| Defender 110/130 | Pre Td5 | Aluminium | BA 7587 |
| Defender 110 | Td5/Tdci | Steel Zinc 500 | BA 7588 |
| Defender 110 | Td5/Tdci | Aluminium | BA 7589 |
| Discovery 2 | | Steel Zinc 500 | BA 7594 |
| Discovery 2 | | Aluminium | BA 7595 |



Fuel Cooler Guard

| Application | | Part Number |
|-------------|------|----------------|
| Defender | 2007 | BA 7561 |

Gearbox Guards

| Application | | | Part Number |
|--------------|----------|----------------|----------------|
| Defender 110 | Td5/Tdci | Steel Zinc 500 | BA 7590 |
| Defender 110 | Td5/Tdci | Aluminium | BA 7592 |
| Defender 110 | Tdci | Steel Zinc 500 | BA 7591 |
| Defender 110 | Tdci | Aluminium | BA 7593 |
| Discovery 2 | V8 | Steel Zinc | BA 7596 |
| Discovery 2 | V8 | Aluminium N8 | BA 7597 |
| Discovery 2 | Td5 | Steel Zinc 500 | BA 7598 |
| Discovery 2 | Td5 | Aluminium N8 | BA 7599 |



Underbody "triple" system

The unique Wildbear™ underbody Discovery 3 and 4 system comes in 3 sections, steering guard, sump guard and transmission guard protecting the essential undercarriage of your Discovery.

This triple system allows customers to buy and fit in stages to spread the cost.

Produced from 8mm N5083 sheet aluminium, bent and welded with a beautiful final brushed finish.

Sump Guard (Alloy)

| Application | Part Number |
|-------------|----------------|
| Discovery 3 | BA 7564 |
| Discovery 4 | BA 7564 |

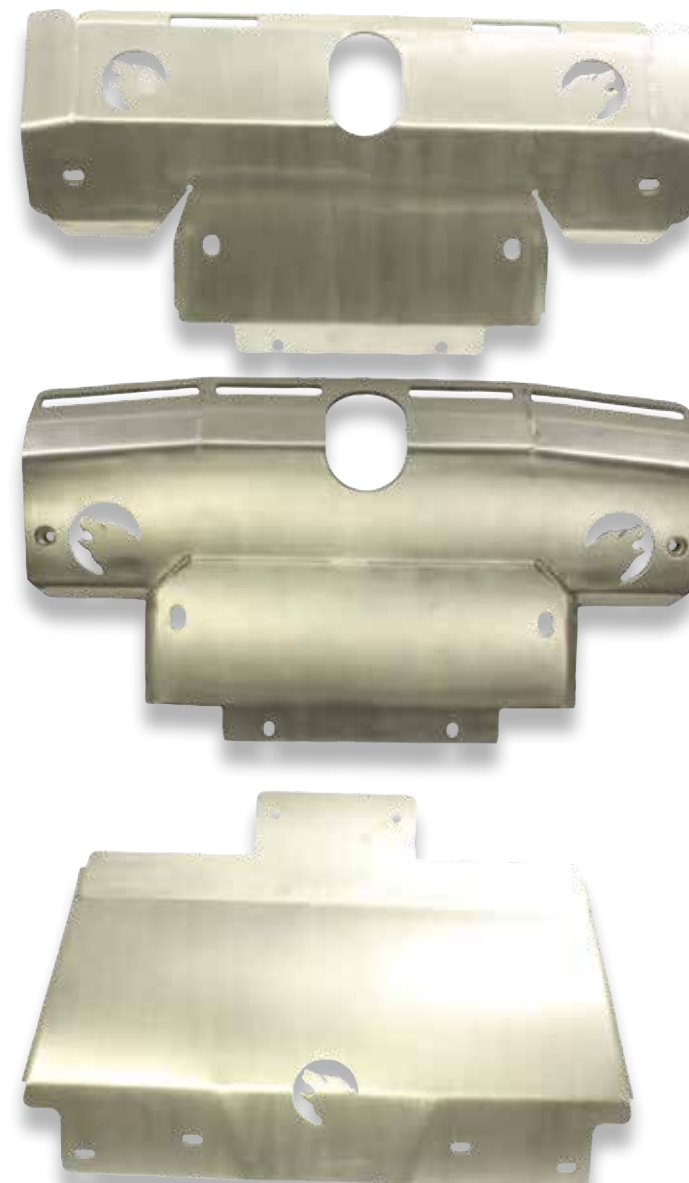


Transmission Guard (Alloy)

| Application | Part Number |
|-------------|----------------|
| Discovery 3 | BA 7565 |
| Discovery 4 | BA 7565 |

Steering Guard (Alloy)

| Application | Part Number |
|-------------|----------------|
| Discovery 3 | BA 7562 |
| Discovery 4 | BA 7563 |



| Rock Sliders | | | |
|--------------|--------|---------------------|----------------|
| Application | | | Part Number |
| Defender 90 | | Tubular Pair | BA 7532 |
| Defender 110 | 5 Door | Tubular Pair | BA 7533 |
| Defender 110 | 3 Door | Tubular Pair | BA 7534 |
| Discovery 3 | | cw Tree Bars Pair | BA 7559 |
| Discovery 4 | | cw Tree Bars Pair | BA 7559 |
| Discovery 3 | | Sill Protector Pair | BA 7560 |
| Discovery 4 | | Sill Protector Pair | BA 7560 |

Rock and Tree Sliders for Defender: These unique 75mm diameter tubular Rock Sliders have a 3.2mm wall to make them the strongest product on the market. They have tapered edges to prevent any snagging when off road. Unlike traditional box section sliders the tubular profile and tapered ends ensure you have a smooth ride, whatever may be in your way. They are galvanised and coated with a textured black powder coat finish for the best looking rock sliders available.

Complete with fitting kit.



Rock and Tree Sliders for Discovery 3&4:

For gentle and occasional green laning use, Wildbear™ offers customers a 6mm N5083 Alloy black powder coated finished sill cover to protect the bodywork from occasional scratches and dents.

For heavier duty off-roading there is a 5mm plate steel rock and tree slider with 2" tubular tree sliding bars ready for whatever the terrain throws at the vehicle. These are shot blasted then finished with an e-coating primer and matt black powder coat for superior finish. Made to last.



| Flexi Wheelarch Kit | | |
|---------------------|------------------------------|----------------|
| Application | | Part Number |
| Defender | 4.5" Wide (5Ft Length) | BA 7671 |
| Defender | 6.5" Super Wide (5Ft Length) | BA 7672 |

Made from EPDM Rubber Compound.
Once installed they form a smooth curve to the contour of the wheel arch and the outer edge turns down making them ideal for competition and challenge vehicles as they will take the knocks without cracking and spring back into shape.
The kit includes four arches, all fixings and instructions.



| Rear Bumperettes | | |
|------------------|------------------|----------------|
| Application | | Part Number |
| Defender 90 | c/w Cut Out Pair | BA 7535 |
| Defender 110 | Pair | BA 7536 |

Complete with fitting kit and grip tape.



Tube Winch Bumper with "A" Bar

| Application | Part Number |
|-----------------------|----------------|
| Defender | BA 7567 |
| Defender With Air Con | BA 7569 |

For use with:

All Superwinch Talon 9.5 and 12.5 models
 Superwinch Tiger Shark 9500 and 11500 models.
 T-Max models up to 12500lbs.



Tube Winch Bumper without "A" Bar

| Application | Part Number |
|-----------------------|----------------|
| Defender | BA 7568 |
| Defender With Air Con | BA 7570 |

For use with:

All Superwinch Talon 9.5 and 12.5 models
 Superwinch Tiger Shark 9500 and 11500 models.
 T-Max models up to 12500lbs.



Winch Bumper High Mount

| Application | Part Number |
|-----------------------|----------------|
| Defender | BA 7571 |
| Defender With Air Con | BA 7572 |

For use with:

All Superwinch Talon 9.5 and 12.5 models
 Superwinch Tiger Shark 9500 and 11500 models.
 T-Max models up to 12500lbs.



A combination of performance and aesthetics has been utilised in the development of the Wildbear™ range, from recreational and competitive off road to commercial use. The entire range of winch bumpers has been created to accommodate Superwinch Talon, Tiger Shark and Husky*** winch ranges from 8500-12500Lbs pulling capacity as well as T-Max winches from 8000-11000Lbs. With most makes of winch sharing common physical dimensions and traditional 10"x4.5" bolt patterns, the majority will fit quite happily into a Wildbear™ tubular winch bumper.

All the Wildbear™ bumper range are made from high grade 6mm steel and 75mm diameter tubes (tubular bumpers) which are then sand blasted, e-coat primed and then matt black powder coated for a superior, lasting finish. All bumpers (Defender, Discovery 1 and Discovery 2) include hi-lift jacking tubes and provision to install Wildbear™ stainless steel swivel recovery rated shackles. All winch bumpers have been VERITAS tested and certified. Wildbear™ bumpers are designed to accommodate the Wildbear™ steering guards.

Tubular Winch Bumpers (Defender): A unique and aesthetically pleasing slant to the A-bar with tabs to install 2x5" lights. These are high mounted above the chassis rails for improved approach angle and strengthened frontal protection and include a steel protection plate to fill the void between the chassis rails. These are able to fit Defenders with or without air conditioning. The same bumpers are also available without the A-bar.

High Mount Tapered Winch Bumper: These provide a more discreet and traditional look for Defender owners whilst retaining all the design characteristics of the Tubular Winch Bumpers. With their sculpted ends they flow neatly into the Defender body lines and are also available to suit Defenders with or without air conditioning.

*** In development.



Winch Bumper Including Driving Lights

| Application | Part Number |
|-------------|-------------|
| Discovery 1 | BA 7573 |

For use with:

All Superwinch Talon 9.5
Superwinch Tiger Shark 9500 and 11500 models.
T-Max models up to 11000lbs.



Winch Bumper Including Round Fog Lights

| Application | Part Number |
|-------------|-------------|
| Discovery 2 | BA 7574 |

For use with:

All Superwinch Talon 9.5 and 12.5 Models
Superwinch Tiger Shark 9500 and 11500 models.
T-Max models up to 12500lbs.



Winch Mount Discreet

| Application | Part Number |
|---|-------------|
| Discovery 3 Discovery 4 Range Rover Sport | BA 7577 |

For use with:

Superwinch Talon
9.5SR and 12.5SR
Lowline models.



Winch Bumpers (Discovery): Discovery 1 & 2 winch bumpers follow lines of the original bumpers whilst improving the approach angle and strengthening the front end. The Discovery 1 front winch bumper includes Wildbear™ cutouts on the front face with Day-Time running lights (included). The Discovery 2 bumper has a circular cut out with mounts to install fog/driving lamps (included) allowing reconnection of the fog light circuit from the original bumper. A steel guard to protect the vulnerable washer bottle is included along with provision to reinstall the headlamp washers.

Rear Heavy Duty Bumpers: These follow the lines of the original bumpers whilst strengthening the rear end. Jacking tubes and provision to install swivel recovery shackles are provided.

Discreet Winch Mount: Manufactured to neatly and discretely install a Superwinch Talon 9.5 or 12.5 winch but without the need for heavy duty bumper thus maintaining the original look of the vehicle.

Heavy Duty Rear Bumper

| Application | Part Number |
|-------------|-------------|
| Discovery 1 | BA 7575 |

With swivel recovery point facility.
(Recommend part number BA 5683, recovery points with shackles)



Heavy Duty Rear Bumper

| Application | Part Number |
|-------------|-------------|
| Discovery 2 | BA 7576 |

With swivel recovery point facility.
(Recommend part number BA 5683, recovery points with shackles)



Headlamp Surround Black

| Application | Part Number |
|-------------|-------------|
| Defender | BA 7537 |



Headlamp Surround Silver

| Application | Part Number |
|-------------|-------------|
| Defender | BA 7538 |



Headlamp Surround Grey

| Application | Part Number |
|-------------|-------------|
| Defender | BA 7539 |



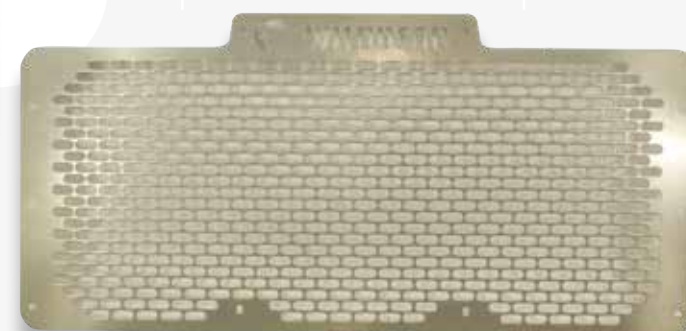
Radiator Grille Stainless Steel Matt Black

| Application | Part Number |
|-------------|-------------|
| Defender | BA 7758 |



Radiator Grille Stainless Steel Silver

| Application | Part Number |
|-------------|-------------|
| Defender | BA 7756 |



Radiator Grille Stainless Steel Grey

| Application | Part Number |
|-------------|-------------|
| Defender | BA 7757 |





Chequer Plate: 5 Bar chequer plate comes in many forms, most famously used for Land Rover Defenders, its quality varies between brands. With Wildbear™, only the best would be good enough to make the cut in the range. We have worked hard with UK based industrial engineers, factories and finishing houses to create the best range on the market, and in our view, worldwide.

With chamfered and de-burred edges, Wildbear™ chequer plate is smooth to touch, once degreased it is finished with a superior powder coating and is available in Matt Black, Silver and Wildbear™ Grey. Every piece of chequer plate comes with a stainless steel colour matched fitting kit and has OEM foam gaskets included for a factory finish.

Wildbear™ is only available in 3mm aluminium 5 bar plate, meaning strength is at its core to protect your body parts. The range includes protection and style for wing tops, bonnets, side sills and rear corners. When only the best will do, then you need Wildbear™; the quality speaks for itself against other leading brands.

| Bonnet Chequer Plate | | | |
|----------------------|---------|----------------|----------------|
| Application | | | Part Number |
| Defender | Td5/Tdi | Silver | BA 7720 |
| Defender | Td5/Tdi | Wildbear™ Grey | BA 7721 |
| Defender | Td5/Tdi | Matt Black | BA 7722 |



All with **OEM** Gaskets

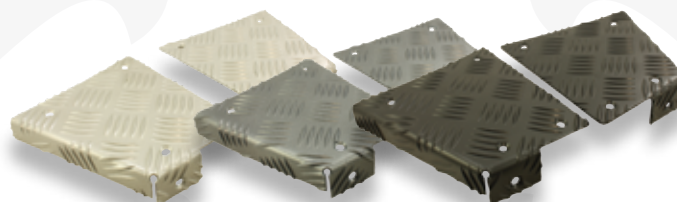
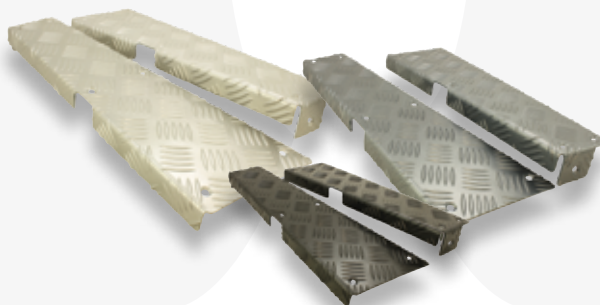


| Wing Top Chequer Plate (Pair) | | | | |
|-------------------------------|----|--------|----------------|----------------|
| Application | | | | Part Number |
| Defender | LH | Aerial | Silver | BA 7747 |
| Defender | RH | Aerial | Silver | BA 7750 |
| Defender | LH | Aerial | Wildbear™ Grey | BA 7548 |
| Defender | RH | Aerial | Wildbear™ Grey | BA 7751 |
| Defender | LH | Aerial | Matt Black | BA 7749 |
| Defender | RH | Aerial | Matt Black | BA 7752 |
| Defender Puma | | | Silver | BA 7753 |
| Defender Puma | | | Wildbear™ Grey | BA 7754 |
| Defender Puma | | | Matt Black | BA 7755 |



Sill Chequer Plate (Pair)

| Application | | | Part Number |
|--------------|-----------------------|----------------|----------------|
| Defender 90 | | Silver | BA 7744 |
| Defender 90 | | Wildbear™ Grey | BA 7745 |
| Defender 90 | | Matt Black | BA 7746 |
| Defender 110 | County Station Wagon | Silver | BA 7738 |
| Defender 110 | County Station Wagon | Wildbear™ Grey | BA 7739 |
| Defender 110 | County Station Wagon | Matt Black | BA 7740 |
| Defender 110 | Van 3 Door (Not HCPU) | Silver | BA 7741 |
| Defender 110 | Van 3 Door (Not HCPU) | Wildbear™ Grey | BA 7742 |
| Defender 110 | Van 3 Door (Not HCPU) | Matt Black | BA 7743 |
| Defender 130 | Double Cab | Silver | BA 7735 |
| Defender 130 | Double Cab | Wildbear™ Grey | BA 7736 |
| Defender 130 | Double Cab | Matt Black | BA 7737 |



Bumper Tread Chequer Plate (Pair)

| Application | | | | Part Number |
|-------------|------------|-------|----------------|----------------|
| Defender | All models | Short | Silver | BA 7726 |
| Defender | All models | Short | Wildbear™ Grey | BA 7727 |
| Defender | All models | Short | Matt Black | BA 7728 |



Rear Corner Chequer Plate (Pair)

| Application | | Part Number |
|--------------|----------------|----------------|
| Defender 90 | Silver | BA 7732 |
| Defender 90 | Wildbear™ Grey | BA 7733 |
| Defender 90 | Matt Black | BA 7734 |
| Defender 110 | Silver | BA 7729 |
| Defender 110 | Wildbear™ Grey | BA 7730 |
| Defender 110 | Matt Black | BA 7731 |



Steering Wheel 14"

| Application | | | | | Part Number |
|---------------------|--------|------------|-----------------------|--------|----------------|
| Defender | | All models | 3 Spoke | Black | BA 7627 |
| Defender | | All models | 3 Spoke (Flat Bottom) | Black | BA 7631 |
| Defender | | All models | 4 Spoke | Silver | BA 7630 |
| Defender | | All models | 3 Spoke | Silver | BA 7632 |
| Discovery 1 | 200Tdi | Up to 1994 | 3 Spoke | Black | BA 7627 |
| Discovery 1 | 200Tdi | Up to 1994 | 3 Spoke (Flat Bottom) | Black | BA 7631 |
| Discovery 1 | 200Tdi | Up to 1994 | 4 Spoke | Silver | BA 7630 |
| Discovery 1 | 200Tdi | Up to 1994 | 3 Spoke | Silver | BA 7632 |
| Range Rover Classic | | All models | 3 Spoke | Black | BA 7627 |
| Range Rover Classic | | All models | 3 Spoke (Flat Bottom) | Black | BA 7631 |
| Range Rover Classic | | All models | 3 Spoke | Silver | BA 7632 |
| Range Rover Classic | | All models | 4 Spoke | Silver | BA 7630 |



Glove Box Conversion Kit (Lockable)

| Application | | Part Number |
|-------------|----------|----------------|
| Defender | Td4 Puma | BA 7566 |



Steering Wheel Boss

| Application | | | | | Part Number |
|---------------------|--------|------------|-----------|---------------|----------------|
| Defender | | | 36 Spline | Coarse Spline | BA 7629 |
| Defender | | | 48 Spline | Fine Spline | BA 7628 |
| Discovery 1 | 200Tdi | Up to 1994 | 36 Spline | Coarse Spline | BA 7629 |
| Range Rover Classic | | | 36 Spline | Coarse Spline | BA 7629 |

Manufactured from billet aluminium. They enable the fitment of strong race steering wheels of various designs.
Please check spline count before ordering.



Challenger Seat

| Application | | Part Number |
|-------------|------------|----------------|
| Defender | Seat | BA 7667 |
| Defender | Seat Liner | BA 7669 |
| Defender | Seat Base | BA 7668 |

Specifically designed to fit into Land Rover Defender Truck Cabs to give more leg room and greater support.
The seat has rolled edges to enable the use of a standard inertia reel seat belt, and low sides for easy access.



| Radius Arms (Front) / Ultralight Castor Arms (Front) | | | | | |
|---|-----------------------|-------------|------|----------|-----------------|
| Application | | | | | Part Number |
| 90 | Up to 1993 (KA930555) | | 38mm | Standard | BA 3673A |
| 90 | Up to 1993 (KA930555) | 2" Lift Kit | 38mm | 3° | BA 3674A |
| 90 | Up to 1993 (KA930555) | 4" Lift Kit | 38mm | 6° | BA 3675A |
| 110 | Up to 1993 (KA930555) | | 38mm | Standard | BA 3673A |
| 110 | Up to 1993 (KA930555) | 2" Lift Kit | 38mm | 3° | BA 3674A |
| 110 | Up to 1993 (KA930555) | 4" Lift Kit | 38mm | 6° | BA 3675A |
| 130 | Up to 1993 (KA930555) | | 38mm | Standard | BA 3673A |
| 130 | Up to 1993 (KA930555) | 2" Lift Kit | 38mm | 3° | BA 3674A |
| 130 | Up to 1993 (KA930555) | 4" Lift Kit | 38mm | 6° | BA 3675A |
| Defender 90 | Up to 1993 (KA930555) | | 38mm | Standard | BA 3673A |
| Defender 90 | Up to 1993 (KA930555) | 2" Lift Kit | 38mm | 3° | BA 3674A |
| Defender 90 | Up to 1993 (KA930555) | 4" Lift Kit | 38mm | 6° | BA 3675A |
| Defender 90 | 1994 on | | 45mm | Standard | BA 3670A |
| Defender 90 | 1994 on | 2" Lift Kit | 45mm | 3° | BA 3671A |
| Defender 90 | 1994 on | 4" Lift Kit | 45mm | 6° | BA 3672A |
| Defender 110 | 1994 on | | 45mm | Standard | BA 3670A |
| Defender 110 | 1994 on | 2" Lift Kit | 45mm | 3° | BA 3671A |
| Defender 110 | 1994 on | 4" Lift Kit | 45mm | 6° | BA 3672A |
| Defender 110 | Up to 1993 (KA930555) | | 38mm | Standard | BA 3673A |
| Defender 110 | Up to 1993 (KA930555) | 2" Lift Kit | 38mm | 3° | BA 3674A |
| Defender 110 | Up to 1993 (KA930555) | 4" Lift Kit | 38mm | 6° | BA 3675A |
| Defender 130 | Up to 1993 (KA930555) | | 38mm | Standard | BA 3673A |
| Defender 130 | Up to 1993 (KA930555) | 2" Lift Kit | 38mm | 3° | BA 3674A |
| Defender 130 | Up to 1993 (KA930555) | 4" Lift Kit | 38mm | 6° | BA 3675A |
| Defender 130 | 1994 on | | 45mm | Standard | BA 3670A |
| Defender 130 | 1994 on | 2" Lift Kit | 45mm | 3° | BA 3671A |
| Defender 130 | 1994 on | 4" Lift Kit | 45mm | 6° | BA 3672A |
| Discovery 1 | 1989-1998 | | 45mm | Standard | BA 3670A |
| Discovery 1 | 1989-1998 | 2" Lift Kit | 45mm | 3° | BA 3671A |
| Discovery 1 | 1989-1998 | 4" Lift Kit | 45mm | 6° | BA 3672A |
| Range Rover Classic | 1986 on | | 45mm | Standard | BA 3670A |
| Range Rover Classic | 1986 on | 2" Lift Kit | 45mm | 3° | BA 3671A |
| Range Rover Classic | 1986 on | 4" Lift Kit | 45mm | 6° | BA 3672A |
| Range Rover Classic | Up to 1985 | | 38mm | Standard | BA 3673A |
| Range Rover Classic | Up to 1985 | 2" Lift Kit | 38mm | 3° | BA 3674A |
| Range Rover Classic | Up to 1985 | 4" Lift Kit | 38mm | 6° | BA 3675A |

Ultralight Castor Correction Arms are designed to correct the castor angle when a vehicle is lifted. This re-aligns the self centre properties of the steering geometry set up. They come in 3° and 6° options for 0-4" and 3-6" lifts respectively. They are also 40% lighter than the standard radius arms reducing the un-sprung weight of the vehicle making it handle better both on and off-road.

- For narrow bushed arms you will need to use part number BSC 202 (bush) or equivalent at the axle end of the arm.
- For wide bushed arms you will need to use part number NTC6781 (bush) or equivalent at the axle end of the arm.

All Wildbear™ radius arms have the new style large diameter chassis pin which will fit to all chassis types using the chassis bush part number BR 2170 for Defenders up to 1997, Range Rover Classic and Discovery, while the part number ANR6971 is for Defender 1997 on. If you have the earlier smaller diameter pin type arms (early Range Rover) then you will also need the front and rear washers for the pin bushes. Part numbers BR 1451 and BR 0448 (2 of each required).

Castor Correction

Your castor corrected radius arms have been computer designed to correct the alteration made to the steering geometry that occurs when a suspension lift kit is fitted to a vehicle. It is important to remember that when fitting a lifted suspension a number of original factory settings will be altered, including a raised centre of gravity, altered steering geometry (which will affect road handling), propshaft angles.

Fitting a lift kit is not without consequence as a result of these items and you should always inform your insurer of any modifications made to the vehicle.

It is also worth noting that whilst correcting one issue another may manifest itself, this can be the case when fitting castor corrected arms to return the steering back to standard but can induce propshaft vibration in certain circumstances. This can be rectified by using high angle prop shafts, or double yolk props for extreme lifts.





Wildear™ trailing arms have been designed to offer an alternative to standard trailing arms when a vehicle has been lifted. Heavy duty cranked trailing arms, suitable for 50mm/2" suspension lifts. Manufactured for extreme durability with our own unique "I" beam construction.

Also fitted with rockslider/stiffener to give maximum protection.

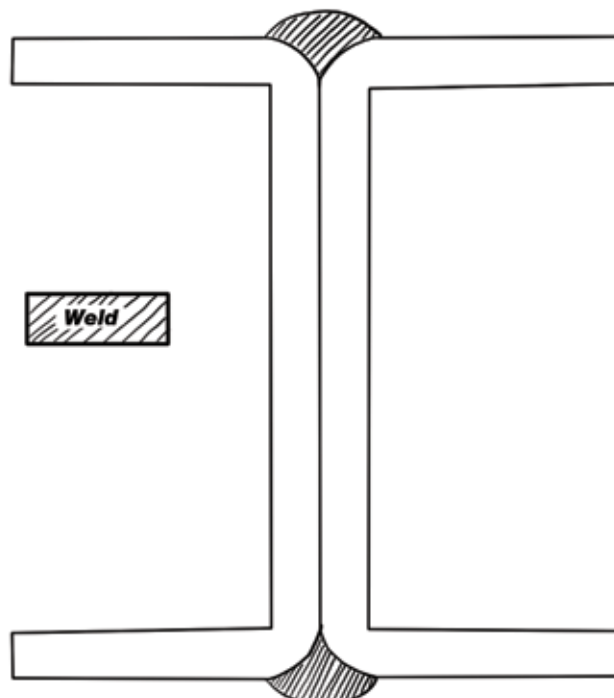
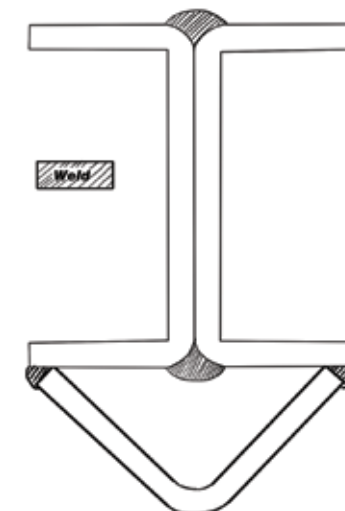
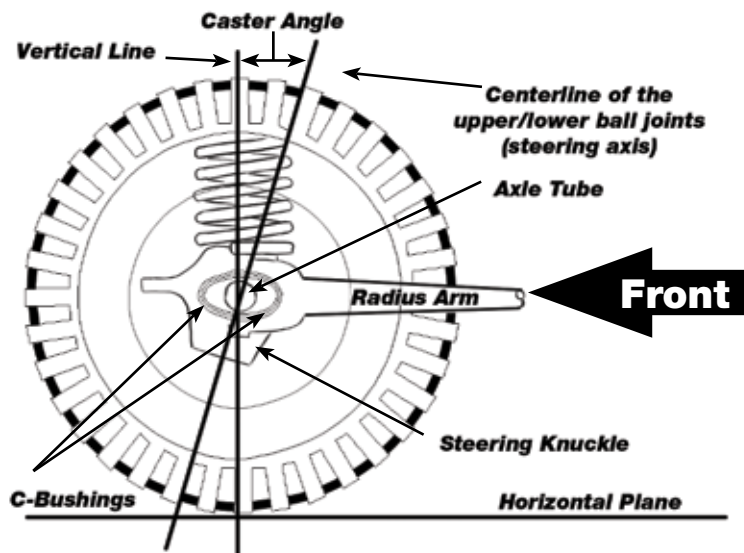
The rose jointed trailing arms utilise a rose joint at the chassis end which gives added articulation for extreme lifts.

- Standard ride height 686mm centre of eye to centre of rose joint.
- 2" Lift 689mm centre of eye to centre of rose joint.
- 4" Lift 693mm centre of eye to centre of rose joint.

Care and Maintenance

The rose joints supplied are high quality motor specification, however due to the harsh operating environment that this application has, it is recommended that regular cleaning and examination is essential. It is possible to use motorcycle chain lubricant to lubricate the rose joints by spraying it up inside the rubber boots using a small extension tube. These joints are designed to function dry so keeping them clean will greatly extend their life.

To get the full flexibility from the rear suspension you can also fit our Hi Flex A-Frame joint which allows even more axle rotation and adjustment by as much as 18°. (BA 7611 Page 18)



| Trailing Arms (Rear) | | | |
|----------------------|------------|------------|-------------|
| Application | | | Part Number |
| Defender | All Models | Rose Joint | BA 7625 |
| Discovery 1 | All Models | Rose Joint | BA 7625 |
| Range Rover Classic | All Models | Rose Joint | BA 7625 |

Steering Bars

| Application | | | | Part Number |
|---------------------|--------------------------|------------|-----------|----------------|
| Series 3 | | All Models | Drag Link | BA 7617 |
| Defender | | All Models | Drag Link | BA 7612 |
| Defender | | All Models | Track Rod | BA 7613 |
| Discovery 1 | 200Tdi | 1989-1994 | Drag Link | BA 7612 |
| Discovery 1 | 300Tdi/Straight drop arm | 1994-1998 | Drag Link | BA 7614 |
| Discovery 1 | | All Models | Track Rod | BA 7613 |
| Discovery 2 | | 1998-2004 | Drag Link | BA 7615 |
| Discovery 2 | | 1998-2004 | Track Rod | BA 7616 |
| Range Rover Classic | | Up to 1995 | Drag Link | BA 7612 |
| Range Rover Classic | | Up to 1995 | Track Rod | BA 7613 |

These steering bars come complete with locking nuts and are zinc plated. They offer greater durability over the original items and other slide over reinforcing bars due to their larger wall thickness minimising the possibility of failure. They are 28mm in diameter and are ALRC competition legal.



Replacement A-Frame Joint

| Application | Part Number |
|---------------------|----------------|
| Defender | BA 7611 |
| Discovery 1 | BA 7611 |
| Range Rover Classic | BA 7611 |

This specialised rear A-frame joint has been developed to increase rear axle articulation. It gives an increase of 9° rotation in all directions over the standard factory joint preventing lockup when the axle is at full articulation. Supplied complete with axle adaptor pin and all fixings. This component also allows fine tuning to the rear suspension by adjustment of the rose joint in and out to allow the vehicle to perform to its best.



Steering Damper Bracket

| Application | | | | Part Number |
|---------------------|-----------|------------|----------------------|----------------|
| Defender | LHD | All Models | Mounted on drag link | BA 7619 |
| Discovery 1 | 1989-1998 | 1989-1998 | Mounted on track rod | BA 7621 |
| Range Rover Classic | | Up to 1995 | Mounted on track rod | BA 7621 |
| Universal* | | All models | Mounted on chassis | BA 7622 |

These steering damper brackets are heavy duty replacements to be used with our up-rated steering bars when the old bars and brackets have been replaced.

*Universal weld-on chassis mount, when removing the steering damper from it's location on the track rod to a safer location on the drag link.



| Coil Spring | | | | | |
|--------------|-------|--------------|----------|--------|----------------|
| Application | | | | | Part Number |
| Defender 90 | Front | 20% Above OE | Standard | Medium | BA 7524 |
| Defender 90 | Rear | 20% Above OE | Standard | Medium | BA 7525 |
| Defender 80 | Front | 20% Above OE | Plus 2" | Medium | BA 7520 |
| Defender 90 | Rear | 20% Above OE | Plus 2" | Medium | BA 7521 |
| Defender 90 | Front | 45% Above OE | Plus 2" | Heavy | BA 7528 |
| Defender 90 | Rear | 45% Above OE | Plus 2" | Heavy | BA 7529 |
| Defender 110 | Front | 20% Above OE | Plus 2" | Medium | BA 7518 |
| Defender 110 | Rear | 20% Above OE | Plus 2" | Medium | BA 7519 |
| Defender 110 | Front | 45% Above OE | Plus 2" | Heavy | BA 7526 |
| Defender 110 | Rear | 45% Above OE | Plus 2" | Heavy | BA 7527 |
| Discovery 2 | Front | 20% Above OE | Plus 2" | Medium | BA 7522 |
| Discovery 2 | Rear | 20% Above OE | Plus 2" | Medium | BA 7523 |
| Discovery 2 | Front | 45% Above OE | Plus 2" | Heavy | BA 7530 |
| Discovery 2 | Rear | 45% Above OE | Plus 2" | Heavy | BA 7531 |

Wildbear™ reviewed many of the marketplace competitors springs, rates and lengths whilst consulting with major OEM manufacturers. The technical team soon became aware from testing that many of the markets “spring offerings” were generic with part numbers fitting multiple makes and models of vehicle. After much deliberating and test results, the Wildbear™ technical team has developed a bespoke range of coil springs.

No two vehicles are alike and neither are the coil springs they require which are why Wildbear™ can assure you of a coil spring selection that's fit for purpose whilst flying the flag for **quality UK manufacturing**.

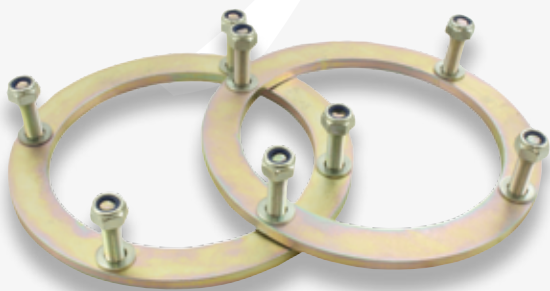
Whether you require a standard ride height heavy duty spring for commercial use and towing, or a plus 2" medium rate spring for off road use, Wildbear™ has the perfect product for your needs.

All Wildbear™ springs are made from the highest quality German sourced steel wire. The springs are produced on a CNC Mandrel and then heat treated, shot peened scragged to prevent sagging and ensure longevity and reliability. Then finally they are zinc primed and powder coated in Wildbear™ grey.



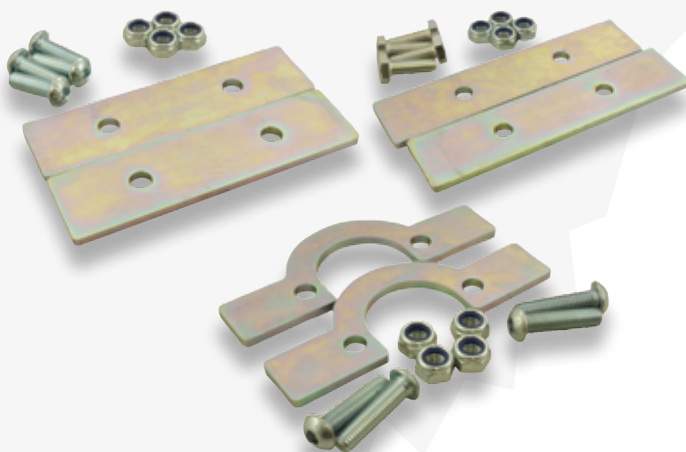
Heavy Duty Turret Rings

| Application | | | Part Number |
|---------------------|-------|------|----------------|
| Defender | Front | Pair | BA 7549 |
| Discovery | Front | Pair | BA 7549 |
| Range Rover Classic | Front | Pair | BA 7549 |



Heavy Duty Coil Spring Retainers

| Application | | | Part Number |
|---------------------|-------|------|----------------|
| Defender | Front | Pair | BA 7556 |
| Defender 90 | Rear | Pair | BA 7554 |
| Defender 110 | Rear | Pair | BA 7555 |
| Defender 130 | Rear | Pair | BA 7555 |
| Discovery 1 | Front | Pair | BA 7556 |
| Discovery 1 | Rear | Pair | BA 7554 |
| Range Rover Classic | Front | Pair | BA 7556 |
| Range Rover Classic | Rear | Pair | BA 7554 |



Suspension Hardware for Defenders, Discovery 1&2 and Range Rover Classic

There is one thing that is key to a safe and successful off-road driving, keeping your wheels on the ground. In all suspension upgrades and replacements it is imperative to ensure you have the correct hardware for your installation. Wildbear™ has a full compliment of hardware to be either fitted alongside the Wildbear™ springs and shock absorbers or added to your existing standard factory suspension. Wildbear™ suspension hardware allows you to customise your Land Rovers suspension and therefore increase suspension travel and articulation.

Through product development, real world testing and technical feedback we have ensured every Wildbear™ product is 'fit for purpose' allowing you to drive safer and further in all types of terrain, from recreational off-road to hard-core competitive use. The range includes extended and lowered shock mounts and turrets, relocation cones, spring lifters and all necessary hardware including heavy duty turret rings and heavy duty 5mm spring retainers. All hardware is zinc coated with Rogard 500 and then powder coated in Wildbear™ grey (turret rings and retainers are coated in Rogard 500).

Please note: Care must be taken when customising your suspension to make sure the suspension works freely throughout full articulation, check that brake lines are long enough and that steering geometry and driveline angles are not adversely affected. If ever in doubt have your Wildbear™ products professionally fitted for ultimate reliability and use.

Lift Rods

| Application | | Part Number |
|-------------|----------|----------------|
| Discovery 3 | Set of 4 | BA 7558 |
| Discovery 4 | Set of 4 | BA 7558 |



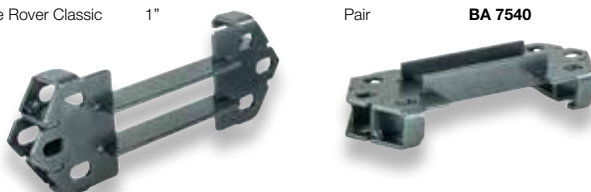
Spring Lifter Kit 2"

| Application | | | Part Number |
|---------------------|----------------|----------|----------------|
| Defender 90 | Front and Rear | Set of 4 | BA 7546 |
| Discovery 1 | Front and Rear | Set of 4 | BA 7546 |
| Discovery 2 | Front | Pair | BA 7548 |
| Range Rover Classic | Front and Rear | Set of 4 | BA 7546 |



Bump Stop Extension

| Application | | | Part Number |
|---------------------|----|------|----------------|
| Defender | 1" | Pair | BA 7540 |
| Discovery 1 | 1" | Pair | BA 7540 |
| Range Rover Classic | 1" | Pair | BA 7540 |



Air Bag Lifter Kit Rear 2"

| Application | | Part Number |
|-------------|-----|----------------|
| Discovery 2 | Kit | BA 7547 |



Shock Turrets (Front)

| Application | | | Part Number |
|---------------------|------------|------|----------------|
| Defender | Lowered 2" | Pair | BA 7550 |
| Defender | Standard | Pair | BA 7551 |
| Defender | Plus 2" | Pair | BA 7553 |
| Discovery 1 | Lowered 2" | Pair | BA 7550 |
| Discovery 1 | Standard | Pair | BA 7551 |
| Discovery 1 | Plus 2" | Pair | BA 7553 |
| Discovery 2 | Standard | Pair | BA 7552 |
| Range Rover Classic | Lowered 2" | Pair | BA 7550 |
| Range Rover Classic | Standard | Pair | BA 7551 |
| Range Rover Classic | Plus 2" | Pair | BA 7553 |



Shock Mounts Top

| Application | | | Part Number |
|---------------------|------------|------|----------------|
| Defender | Lowered 2" | Pair | BA 7557 |
| Discovery 1 | Lowered 2" | Pair | BA 7557 |
| Range Rover Classic | Lowered 2" | Pair | BA 7557 |

Includes chassis bolts



Relocation Cone

| Application | | | Part Number |
|---------------------|-------|------|----------------|
| Defender 90 | Front | Pair | BA 7544 |
| Defender 90 | Rear | Pair | BA 7542 |
| Defender 110 | Rear | Pair | BA 7543 |
| Defender 130 | Rear | Pair | BA 7543 |
| Discovery 1 | Front | Pair | BA 7544 |
| Discovery 1 | Rear | Pair | BA 7542 |
| Range Rover Classic | Front | Pair | BA 7544 |
| Range Rover Classic | Rear | Pair | BA 7542 |



Long Travel Catcher Cone

| Application | | Part Number |
|---------------------|-------------|----------------|
| Defender 90 | Pair (Rear) | BA 7545 |
| Discovery 1 | Pair (Rear) | BA 7545 |
| Range Rover Classic | Pair (Rear) | BA 7545 |



Reverse Relocation Cone

| Application | | | Part Number |
|---------------------|------|------|----------------|
| Defender 90 | Rear | Pair | BA 7541 |
| Discovery 1 | Rear | Pair | BA 7541 |
| Range Rover Classic | Rear | Pair | BA 7541 |




WILDBEAR



Your Local Stockist is:



VORTEX®

VORTEX Handels-GmbH

Bundesstraße 27

7093 Jois

Österreich

www.teile.at

02160 / 76006

vortex@teile.at